



orb

Our Future Transport and Mobility Environment

Dr Charles Karl, National Discipline Leader, 1 Sept 2020
iMOVE Project 3-008

Making sense of the “*Forest from the Trees*”

Transport and mobility management involves a combination of people, processes, systems and technology.

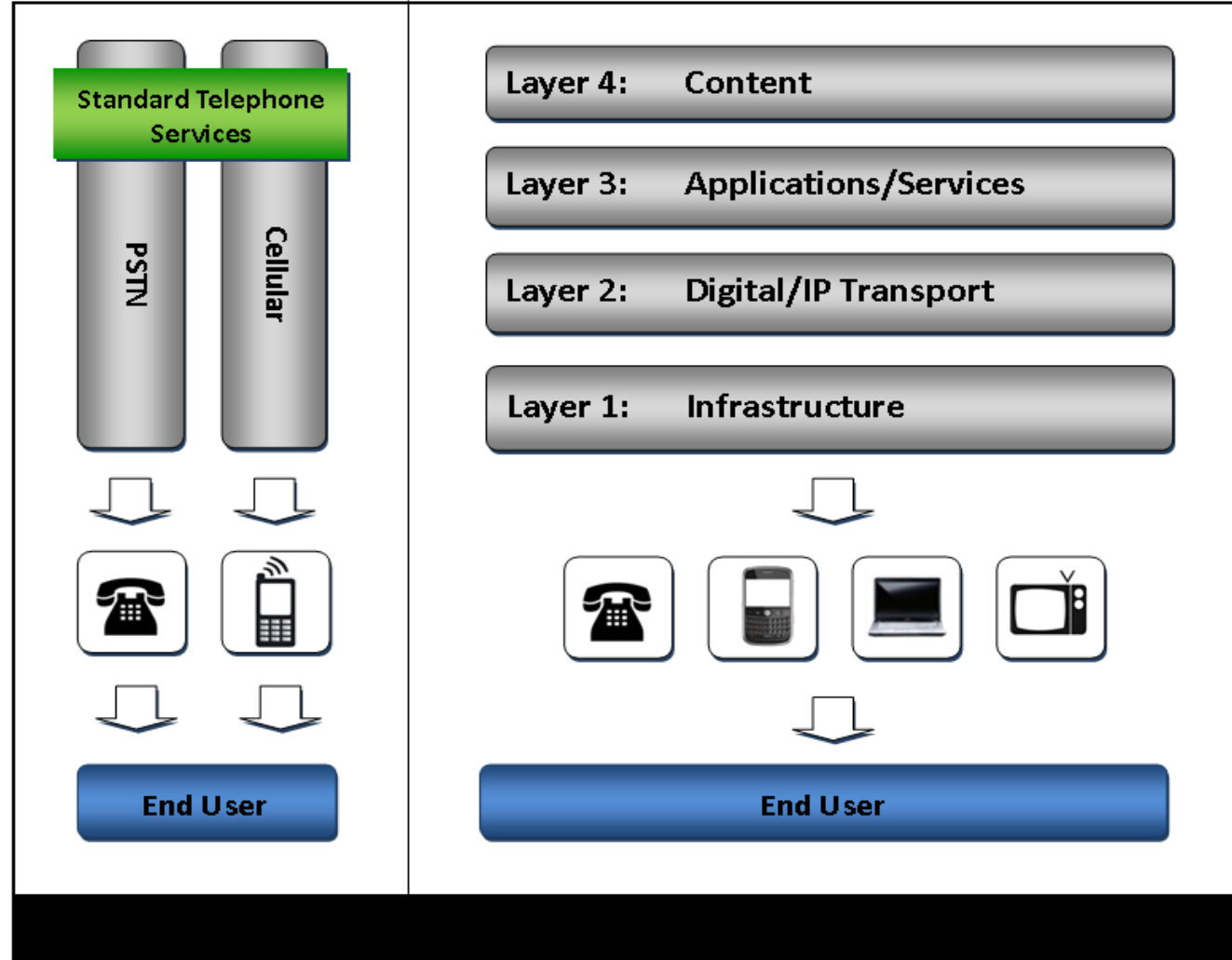
This project seeks to develop a conceptual Future Transport & Mobility Environment (FTME), showing its key components and roles.

This is a foundational piece of work as it, (i) supports coordination of activities and investments, and, (ii) enables identification and development of future solutions.



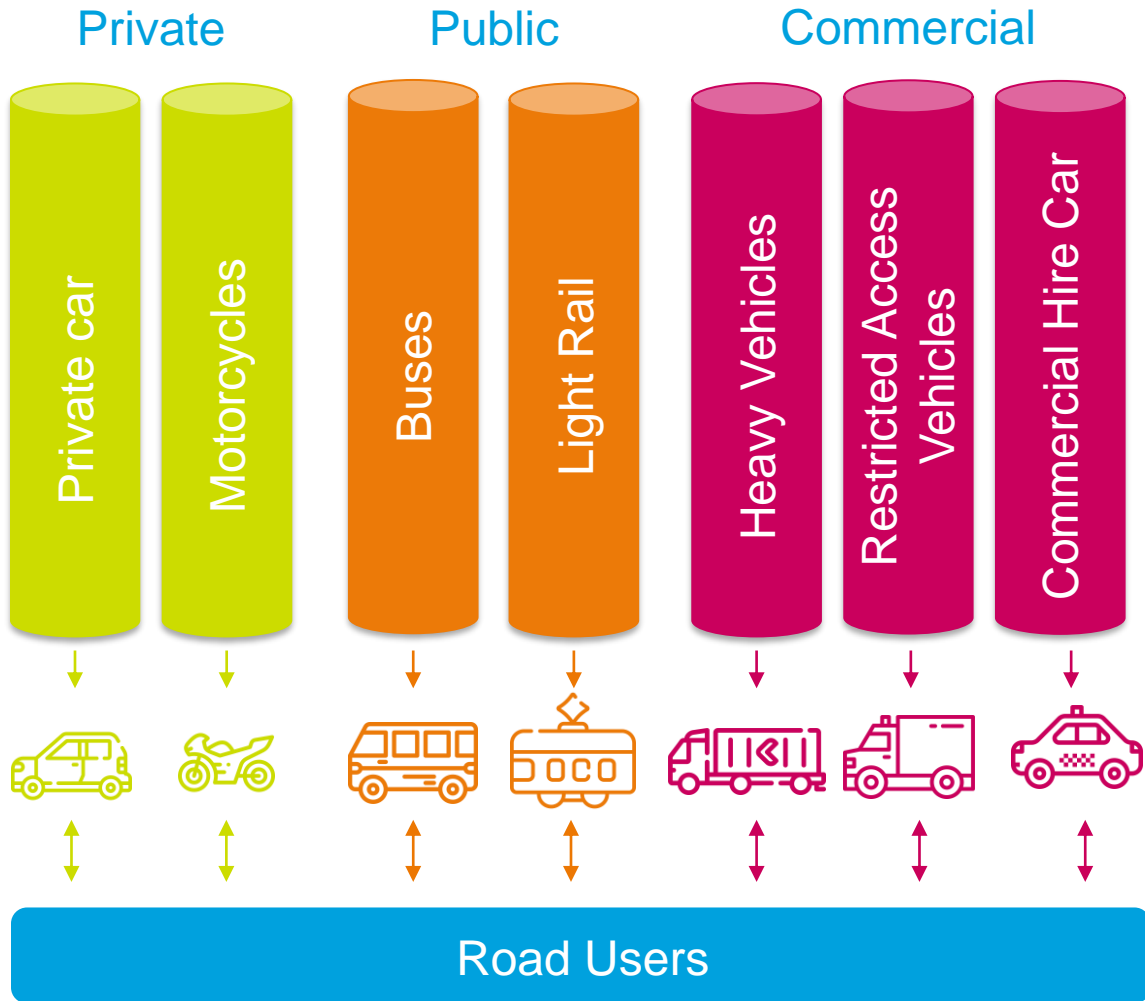
Telecommunications, circa 2011

BROKEN CONCEPTS, August 2011.
The Australian Communications Legislative Landscape,
Australian Communications and Media Authority.

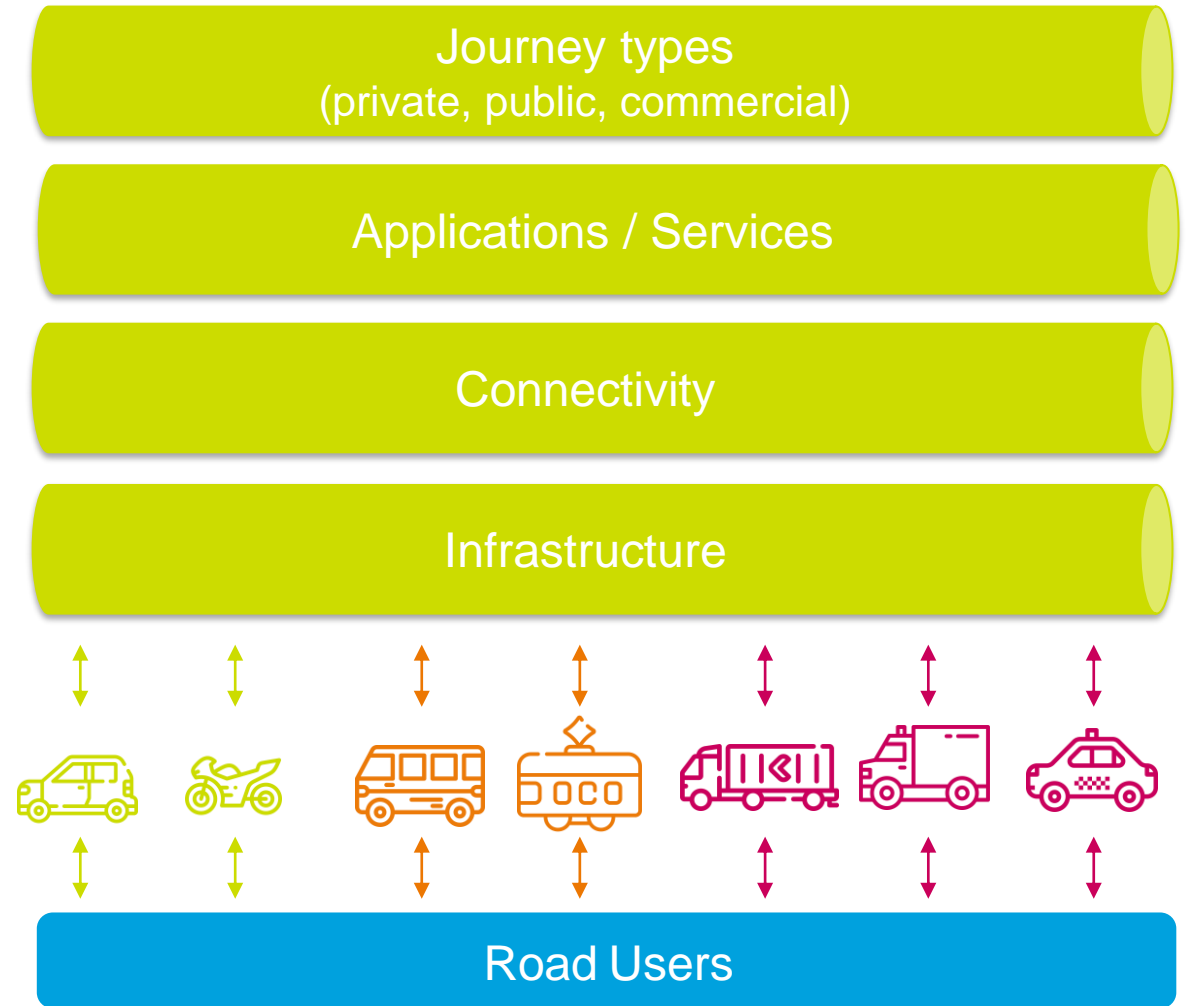


Next Generation Transport

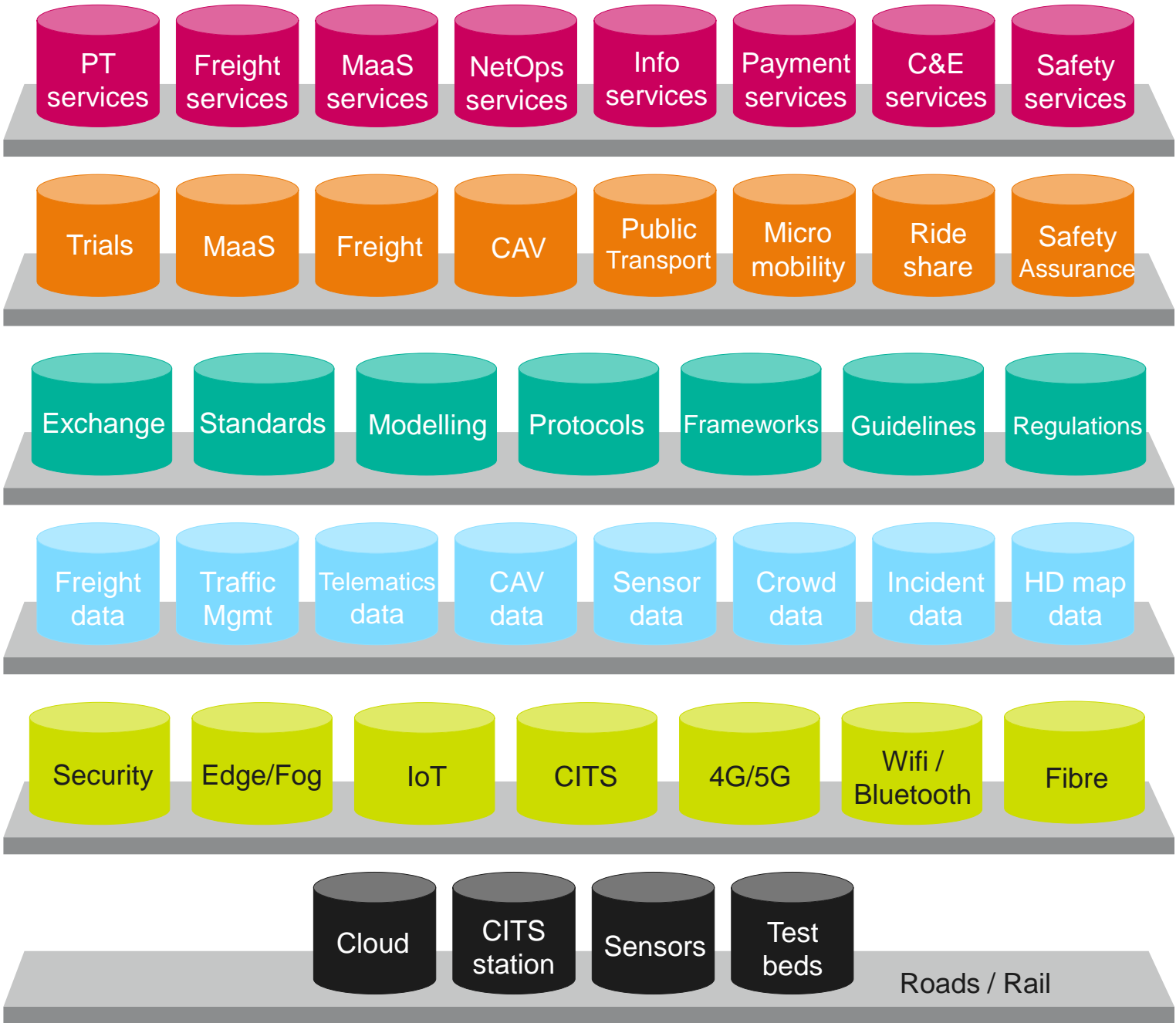
Physical Infrastructure



Digital Infrastructure



The Australian Pantry



Services

Processing

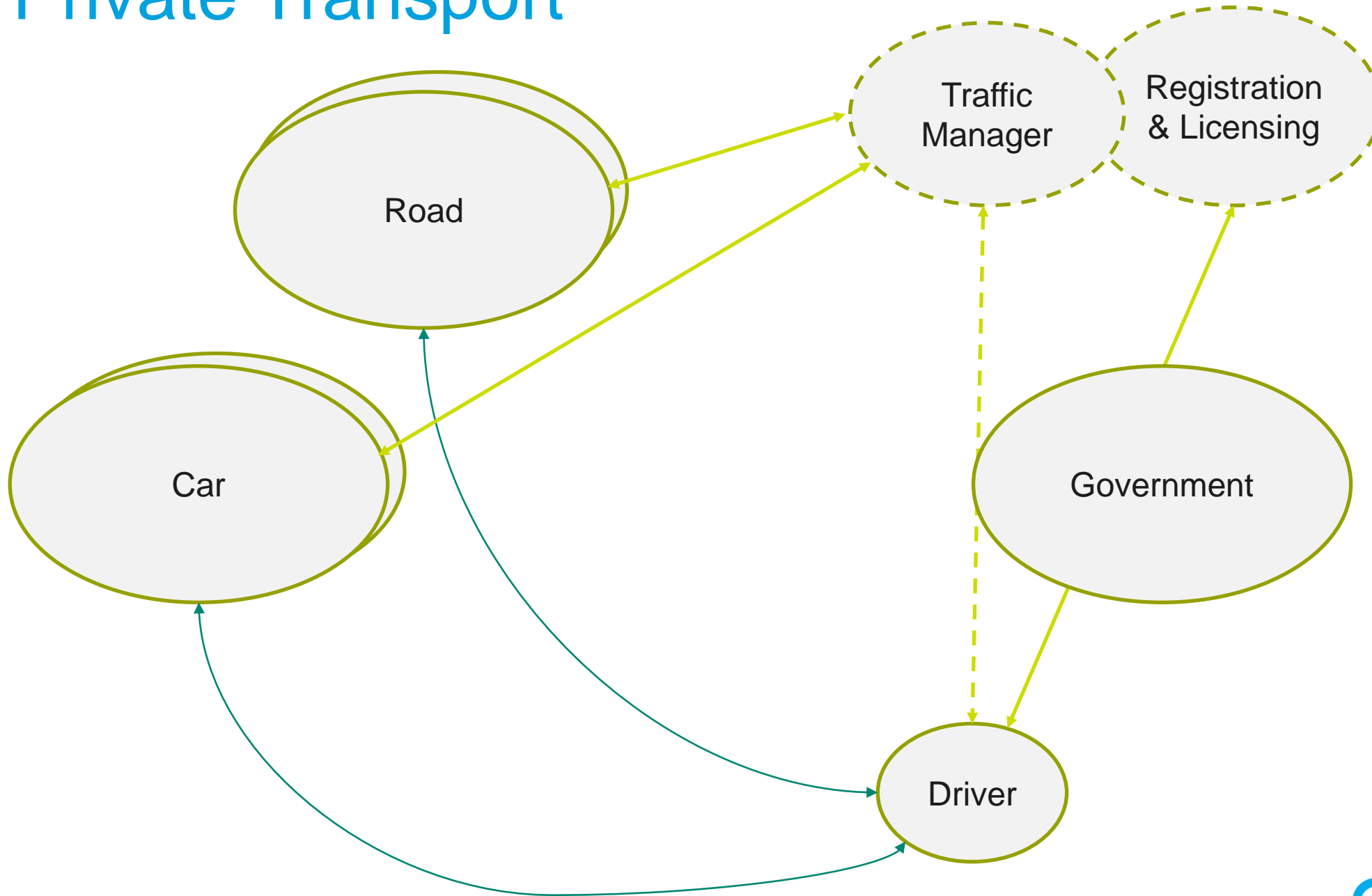
Logical elements

Data

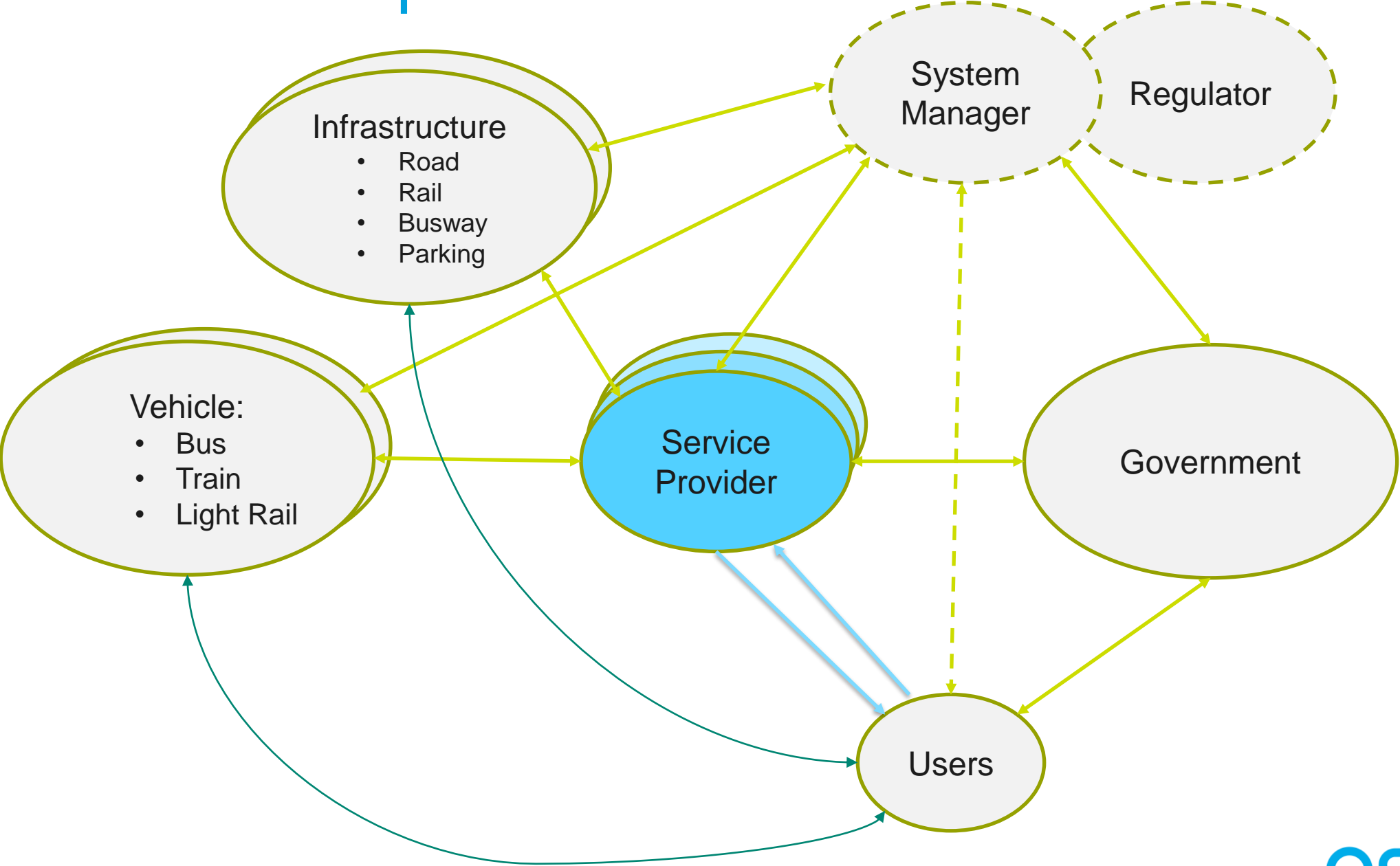
Digital infrastructure / Connectivity

Physical infrastructure / roads & devices

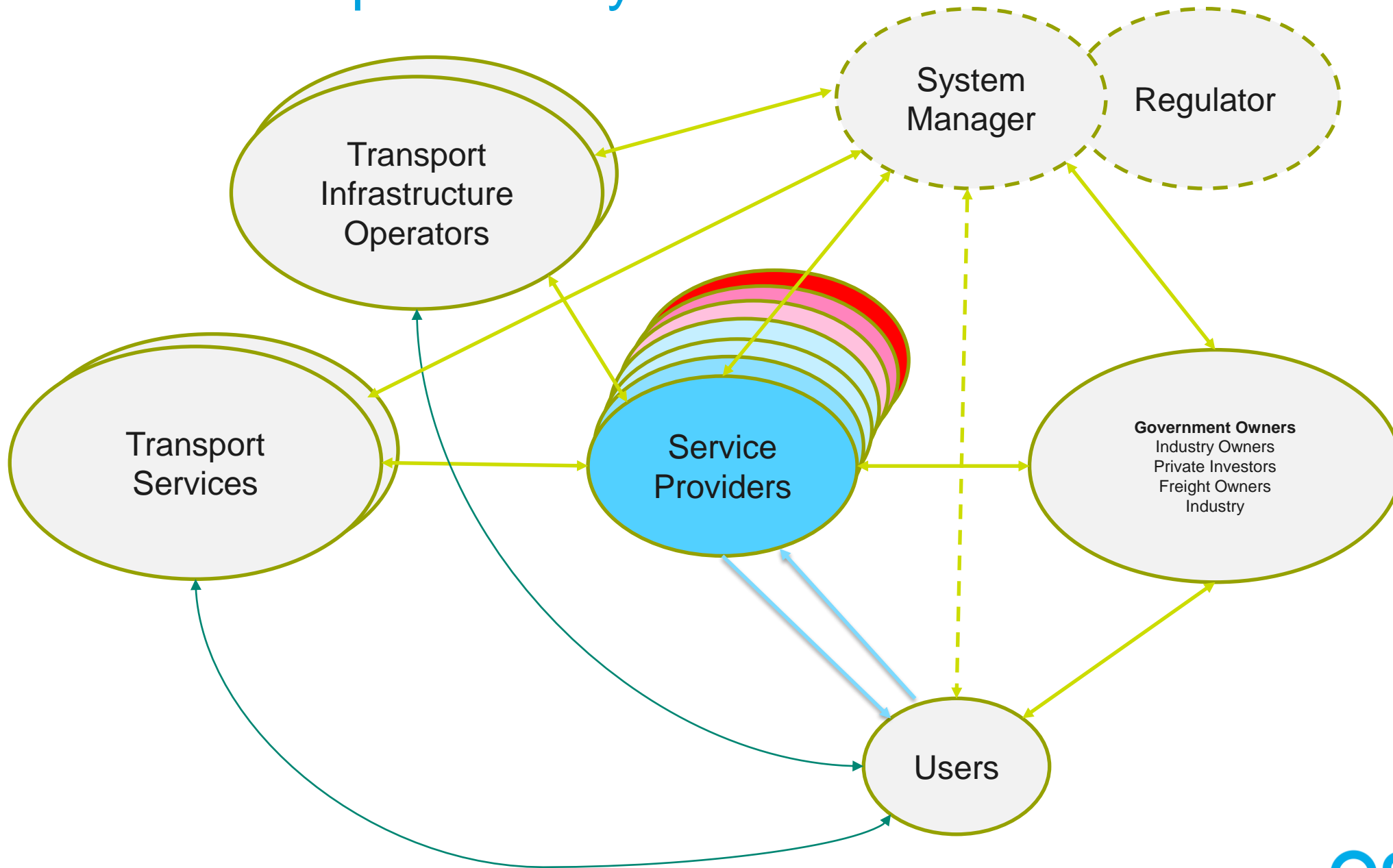
Private Transport



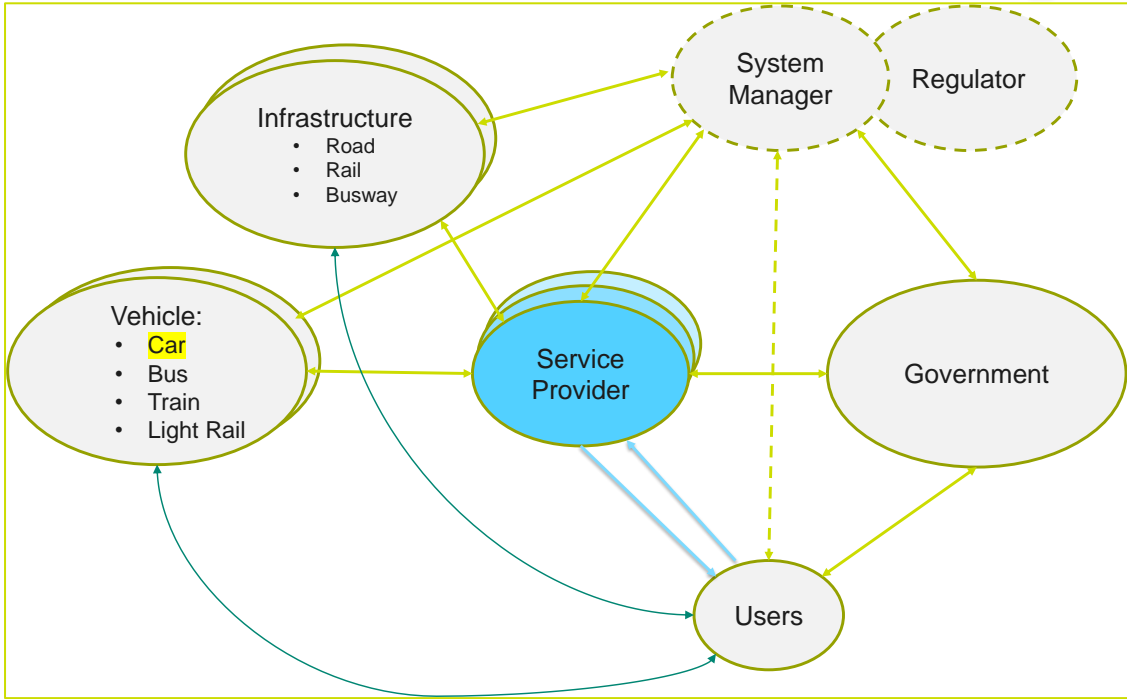
Public Transport



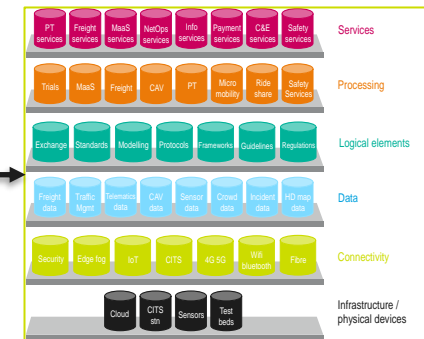
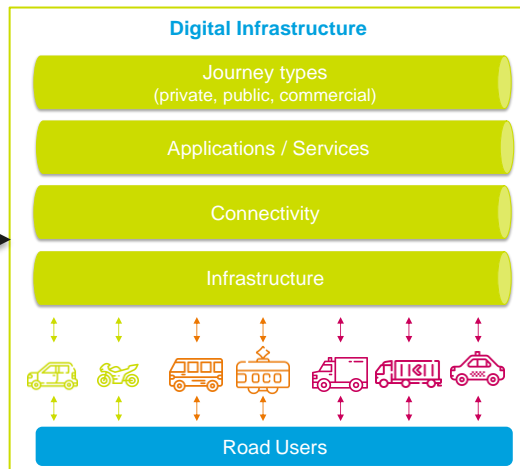
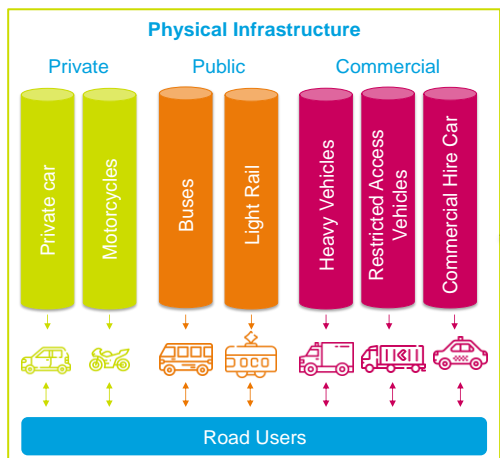
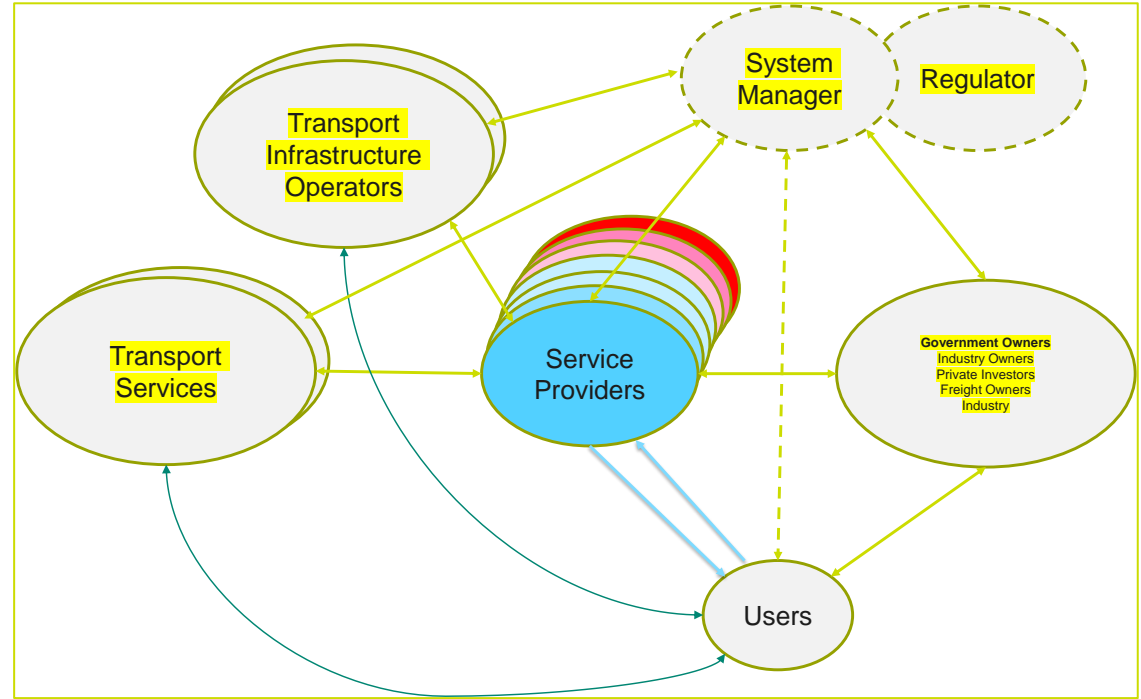
Future Transport Ecosystem



Today



The Future



The image features a vibrant blue background with a pattern of white dots that form a series of curved lines, creating a sense of motion and depth. In the top left corner, the word "arto" is written in a clean, white, lowercase sans-serif font. Below the logo, a large, light blue, rounded rectangular shape contains the text "SHAPING OUR TRANSPORT FUTURE" in a bold, blue, uppercase sans-serif font.

arto

SHAPING
OUR
TRANSPORT
FUTURE